



Krewe of St. Andrews

KOSA since 1997

January 2012



KREWE MISSION: To focus positive attention on Historic St. Andrews by bringing people into the area to enjoy the Mardi Gras Parade as well as to generate funds to be invested in improving Historic St. Andrews.



Greetings from the King and Queen!!!

Hope everyone had a GREAT Christmas and a GREAT start to your New Year!

Things are really starting to roll now! Before you know it this Mardi Gras season will have flown by us! The Queen and I are busy getting ready for, what we hope to be the best Ball ever. We want to make sure that all the members can try to attend. You'll be sure to have a BIG time as you help celebrate our coronation and the 15th Anniversary of the Krewe of St. Andrews!

So much happening at this time of year, I would like to take this moment and encourage all of the members to remember our Royal King & Queen Charity, "Second Chance"! We, and the Royal Court are hosting the first ever, "off Ball site" Brunch; complete with Champagne fountain and Bloody Mary's, eggs, sausage, gravy, hash browns, and fruit. It will be located at the Palms Conference Center" across from Zoo World on Front Beach Rd. from 10am to 1pm.

(Continued on page 3)



Message from the President

I want to personally wish all of you a Merry Christmas and a Happy New Year! Take time to rest and spend time with your loved ones. As we gear up for our ball and parade season, I want to encourage everyone to get involved and enjoy getting to know your fellow KOSA members.

Plan to attend our January 6th Quarterly Meeting to be held at Loco's on 23rd street. Our business meeting will begin at 6:15 so come early, get a seat and order your beverages prior to the meeting. We will be up-

(Continued on page 6)

IN THIS ISSUE

Upcoming Events	2
Member Spotlight	4
\$10 Ball Re-Cap	5
Committee Info	6
King and Queen Benevolence	7
Newsletter Sponsors	8

UPCOMING EVENTS

JANUARY

January 6, 2012 QUARTERLY MEMBERSHIP MEETING, 6:00 p.m. at Loco's

January 21, 2012 ROYAL BALL, Edgewater Beach Resort 7:-00 p.m. to 12:00 a.m.

- Doors close at 8:00 p.m. for tableau and will reopen after
- Last Day to Pick up or Purchase Tickets—January 6, 2012
- Room are available for those who wish to spend the night at Edgewater. Call 235-4044 to make reservations

FEBRUARY

Saturday, February 4, 2012 MARRIAGE TO THE SEA, Location TBA

Wednesday, February 8, 2012 FLOAT CAPTAIN DINNERS, 5:30 p.m. local St. Andrews Restaurants



- Each float captain draws the name of a restaurant in St. Andrews (Time Out, Uncle Ernie's, Captains' Table, Shrimp Boat, or Hunt's Oyster Bar). Riders for each float are encouraged to dine at "their" restaurant with their fellow riders.
- The King, Queen, and Royal Court visit St. Andrews restaurants in style for meet-n-greet socials, complete with beads and bling!

Thursday, February 9, 2012 KIDS' BALL, St. Andrews Civic Club 6-10 p.m. (across from Oaks by the Bay Park). Doors open at 6:00 p.m., Tableau at 6:15 p.m.

- \$2 Adults / \$1 Children (5-10yrs)
- Entry forms are available online www.standrewsmardigras.com
- Entries will be judged by the Waterfront Partnership

Friday, February 10, 2012

MARDI GRAS PET PARADE 2:00 p.m.

KIDS' PARADE 4:00 p.m.



CAJUN COOK-OFF/PARADE AFTER PARTY, 7:00 p.m. Time Out (across from the marina)

FESTIVAL 2:00—7:00 p.m., 70 vendors, Live Music on six stages

February 11, 2012

MAIN PARADE, 2:00 p.m. Staging at 11th St and Beck Ave

AFTER PARADE PARTY, Shrimp Boat Restaurant, Magnolia Room, Details to Follow!

- Anyone wishing to help plan the after-party call: Pam George 850-258-4654

FESTIVAL, 10:00 a.m.—10:00 p.m.

February 21, 2012 FAT TUESDAY PARTY - Time and location TBA

NEW



Attention all KOSA Members

If you plan to attend the Royal Ball
and not received your tickets;

You can pick them at the Quarterly meeting
or make arrangements to pick up your tickets by

Contacting Ellen Davis at 785-0014
or
Anne Fatzer at 866-4574

No later than January 6, 2012



*(King Terry and Queen Carol Message
Continued from page 1)*

Tickets for this event are on sale and will be available at Krewe functions including the Quarterly meeting on Jan. 6rd. The cost per ticket is only \$15.00 (donation) per person and ALL of the proceeds will go to Second Chance. A wonderful organization that works with, on a daily basis, adults who have suffered a severe brain trauma of some type. They help them adjust and cope with everyday things that you and

I take for granted. See Ellen Davis or Anne Fatzer for tickets or myself

So gear it up!! Lots to become involved with and lots to do! So what are you waiting for? Get out there and get involved and have the time of your life, meet and make new friends, and if you're not careful, you just might enjoy yourself!

So let the good times roll!!

King Terry and Queen Carol 2012

January



Birthdays

Carmen Farias-Billot 1/7
Margo Anderson 1/9
Barbara Cleland 1/10
Jeff Timmerman 1/16
Terri Lillard 1/17
Teresa Gepner 1/19

Tina Hudson 1/23
Charlie Kehr 1/23
Barry Mitchell 1/25
Kathleen Majka 1/28
Marcia Avery 1/29
Jimmy Davis 1/31

MEMBER SPOTLIGHT (getting to know your fellow Krewe members)



We are Rick and Lori Cowan. We joined the Krewe in 2008. In April we will have been married 7 years. We love to dive, swim with the manatees, spend time with friends and all the great people in the Krewe.

We met at JCPenneys when I hired Rick for a part-time seasonal position; "little did he know." We have 2 children. Michael, 22, is getting married in June. Michael works at the youth center on Cherry Street and is very involved with the youth and young adults at his church.

Alexandra, "Alex," who is a senior at BHS, loves cheerleading and working at Victoria's Secret and Dream Gowns. She's not sure where she will attend college, but intends to pursue a career in the medical field.

I grew up in Minnesota and moved to Panama City 21 years ago. I have spent 30 plus years in retail. Eight years ago called it quits and took a little time to reflect on what I would really like to do. I started taking classes at Gulf Coast. Then choose to pursue a degree in Radiography. I graduated in June 2011!

I am currently working at Nichols Physical Therapy on the Beach and love it! Rick grew up in Michigan and joined the USAF in 1977, right out of high school. He retired in 2003 as a Master Sergeant from Tyndall AFB. He attended Phoenix College Paramedic program graduating in 1992 and became a SCUBA instructor in 2001.

We love living here by the beach and the water, but it seems there is never time to enjoy it. A year after Rick retired from the Air Force, he took a job as a Remote Duty Paramedic on an oil rig. After the first week we were wondering, "What did I get myself into." After 26 years of military discipline and protocol he found himself working with a bunch of, "good old southern boys from Mississippi to Texas." Other than their highly misplaced love for the SEC (Go Big Ten) he wouldn't trade them for anything . . . talk about a wake up call to civilian live. Other than that we are a house divided. Rick being a Michigan State fan and Lori loving the Nebraska Cornhuskers. We're looking forward another fantastic year with the Krewe so Laissez les bons temps rouler!



***PLEASE EXTEND A WARM
WELCOME TO NEW MEMBERS:***

Lee and Margo Anderson

*Lee and Margo are sponsored by
Sandy and Gary Harrison*

Don't forget! Our membership drive continues until February 21st, 2012. Will you earn a free year's membership?



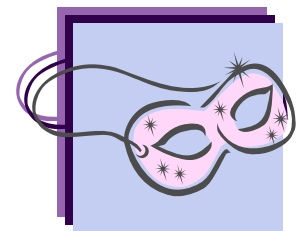
1st Annual \$10 Ball

December 10, 2011

The \$10 Ball was held as a fundraiser to support the building fund. Much revelry was had and when it was all said and done, the Krewe raised over \$2000!!!!



Above: Bill Lillard, George Anderson, Barry Mitchell



Clockwise from left: Linda & Kim Coram, Jan Cox, Leslie Fuqua, Pat George, Lori & Rick Cowen, Anne Fatzer, Gary Harrison, Sandi Harrison, Bill Hudson & Carol Sain, Jim Scott & Leah Matthews



KOSA Committees:

Have a question? Want to join a committee? Contact the committee chair or board liaison below.

Committee	Chair	Chair Email	Board Liaison
Membership Committee	Ellen Davis,	Ellen11447@comcast.net	Jill Poyant,
Photography	Richard Hill	moondawg021868@aol.com	Patti Fowler
Fundraising	Charlie Coram	chcoram@aol.com	Charlie Coram
Golf Tournament	Doris Bowdoin	doris.bowdoin@gmail.com	Tom Bowdoin
Draw Down	Pam Isenberg	Isenbpr@bay.K12.fl.us	
Scampy's	Vicki Gillmore	gillmvd@bay.k12.fl.us	
Scholarships	Patti Fowler	pbfpc@aol.com	Patti Fowler
Merchandise Committee	Frank Gillmore	fdg321@comcast.net	Jerry McGuigon
Internal Communications	Fay McGuigon	fmcguigon@yahoo.com	Jerry McGuigon
Website	Chuck Thiele	cthiele@knology.net	Pam George
Float/Trailer Management	Bill Fowler	fowlerWF@gmail.com	Patti Fowler
Public Relations & Promotions	Pam George	pgeorge713@aol.com	Pam George
Kids Parade	Al & Kathy Kidd	alkathy@knology.net	Tom Bowdoin
Parade	George Anderson	geoandclaudia@knology.net	Tom Bowdoin
Social Committee	Anne Fatzer	annefatz@aol.com	Anne Fatzer
Newsletter Editor	Jill Poyant	jill.poyant@gmail.com	Jill Poyant
Beach Chamber Connections	Terry & Carol Hook	beechsidebum1@knology.net	
Bay Chamber Connections	Merle Johnson	merlegj13@yahoo.com	



(Message from the President continued from page 1)

dating you on the progress of our building efforts, giving you important dates regarding upcoming parades and gearing up for the Royal Ball. New membership handbooks will also be distributed at the meeting.

If you have not picked up your Ball tickets, you can do so at the Quarterly Meeting. See Anne Fatzer or Ellen Davis for questions.

Hope to see you on the 6th!

Patti Fowler, President

JANUARY ANNIVERSARIES



Richard Hill

1/9

Jimmy and Ellen Davis 1/14

The King and Queen may, at their discretion, select a benevolence project that they wish to support. Over the course of their reign they raise funds through various avenues. In addition to fundraising efforts of the King and Queen, the funds earned during the Mardi Gras Cook-Off can be donated as part of their benevolence. Past charities include: SIMS Veterans Home, The Panama City Rescue Mission's Bethel Village, and Habitat for Humanity.

King Terry and Queen Carol have chosen Second Chance of Northwest Florida, Inc. Second Chance. is a non-profit 501(c)3 organization founded in 1989 by the late Dr. Clell Warriner. Through his practice, Dr. Warriner recognized the need to create a safe haven where brain injury survivors could socialize and relearn skills lost as a result of injuries. Services are available to residents of Bay, Calhoun, Gulf, Holmes, Jackson, and Washington counties in the Florida panhandle.

Since inception, hundreds of brain injury survivors have benefited from participation in cognitive training, educational programs (including social and life skills development, support groups, computer training, the arts, volunteerism, outings, recreational, and referral services. These specialized services expand the continuum of care following medical rehabilitation and encourages community integration.

Members of Second Chance are blessed to be alive after narrowly surviving traumatic brain injuries (resulting from a severe blow to the head) or acquired brain injuries (stroke, aneurysm, disease, illness, etc). Now that they have survived against great odds, their greatest challenge is learning how to live life again with permanent disability.

Retraining and relearning requires time, consistency, expertise, and a structured, secure environment. Social Security Disability or Social Security Income (SSI) is the only source of income for many brain injury survivors.

Social and economic struggles are overwhelming to survivors and their families. Community integration and reestablishment issues seem insurmountable. Second Chance of Northwest Florida exists to help restore function, hope, dignity, and quality of life. (Source: secondchancenwfl.com)



*Photo of the Palms Conference Center
at the Sleep Inn Hotel*

**THE AFTER BALL BRUNCH IS A FUNDRAISER TO
SUPPORT THE KING AND QUEEN BENEVOLENCE!!!!**

\$15 DONATION

Contact Ellen Davis or Anne Fatzer for tickets

Directions from the Ball (Edgewater)

- Head East on Front Beach Road
- Continue for 2.0 Miles
- The Palms Conference Center (pictured) is located the Sleep Inn at 9201 Front Beach Road

Newsletter Sponsors

Bruce Avery



**CHOICE MAINTENANCE
OF BAY COUNTY,**

Make the Right Choice


HOME REPAIRS
CABINETS
RENOVATIONS
TILE

5260 Stewart Drive
Panama City, Florida
32404

Phone: (850) 258-0901
E-mail: bruceavery1@gmail.com

Carlton R. Stabler
Financial Advisor

Edward Jones
MAKING SENSE OF INVESTING



2426 Lisenby Avenue
Panama City, FL 32405
Bus. 850-785-2558 Fax 877-222-3685
TF. 877-785-2558 Cell 850-276-8651
carlton.stabler@edwardjones.com
www.edwardjones.com



**Omelets * Waffles
Steaks**

**LINDA M. CORAM
CHARLIE CORAM**
2729 West 23rd Street
Panama City, FL 32405
(850) 872-3447
(850) 866-3447 cell



HuntsOysterBar.com

Eat 'em Raw!
at
HUNT'S OYSTER BAR

1150 BECK AVE. IN HISTORIC ST. ANDREWS | 850-763-9645 | M-SAT 11-9:30

Board of Directors:

Board	Title	Phone	Email
Patti Fowler	President	850.832.9513	pbfpc@aol.com
Pam George	President Elect	850.866.7659	pgeorge713@aol.com
Jill Poyant	Treasurer	850.832.5218	jill.poyant@gmail.com
Anne Fatzer	Secretary	850.866.4574	annefatz@aol.com
Tom Bowdoin	Member at Large	850.527.8774	doris.bowdoin@gmail.com
Charlie Coram	Member at Large	850.866.3447	chcoram@aol.com
Jerry McGuigon	Member at Large	850.249.9522	jfvette@knology.com

Newsletter Sponsors

SCOTT RENTALS, INC
 2019 East Avenue Panama City, Florida 32405

*Do it yourself
 But rent from us*

e-mail: marciastri@knology.net
 Phone (850) 215-8025
 Fax (850) 215-8027

AFA
 American Rental Association
 ASSOCIATE MEMBER

Marcia Avery
 General Manager

Residential/commercial rental equipment

Coastal Community Insurance Agency, Inc.

2611C West 23rd Street
 Panama City, FL 32405
 P.O. Box 1518, Lynn Haven, FL 32444

Janice Hanks, CIC
 Branch Manager/Commercial Producer

850-215-4117 Direct
 850-258-6506 Cell
 850-215-4121 Fax
 E-mail: janicehanks@knology.net





We Cater

OUTLAWS

Hours of Operation
 Mon-Thu 11am-8pm
 Fri & Sat 11am-10pm
 Sun 11am-7pm

Dine-In Drive Thru

BAR-B-Q

Panama City's
MOST WANTED

215-3335

2675 W. 23RD ST. PANAMA CITY, FL 32405

FEATURING:
 BABY BACK RIBS
 PORK RIBS - BEEF BRISKET
 PULLED PORK - BBQ PIZZAS
 SWEET POTATO FRIES
 DRIVE THRU SPECIALS



Jew - E!
 Jewelry and Accessories

Hand Painted Tuxedos and Finery

Ellen Davis
 850-785-0014

ellen11447@comcast.net
 Fax: 850-913-8110

BLACK TIE
 Formalwear
"The True Professionals"

834 West 23rd Street (Next to Hobby Lobby) Panama City, FL 32405
www.pctuxguys.com - 850-785-2437 - Fax 850-785-0377

SCAMPY'S
 SEAFOOD & STEAK

4933 Thomas Drive
 Panama City Beach, FL 32408
850-235-4209



Jan Cox, GRI
 Broker Associate
 AHWD

 **Prudential**

Shimmering Sands Realty
 7923 Panama City Beach Parkway
 Panama City Beach, FL 32407
 Cell: 850-014-2252 Fax: 850-235-9003
 Email: jhcox@knology.net

Jill Poyant, Newsletter Editor
c/o KOSA
PO Box 16791
Panama City, FL 32406-6791

ADDRESS CORRECTION REQUESTED



CF SIGN & STAMP

1802 BECK AVE.
orders@cfsign.com 850-785-7953